

INSTALLATION INSTRUCTIONS FOR MODEL FL3TK FLOODLIGHT TELESCOPING MOUNTING KIT

SAFETY MESSAGE TO INSTALLERS

People's lives depend on your safe installation of our products. It is important to read, understand and follow all instructions shipped with the products. In addition, listed below are some other important safety instructions and precautions you should follow:

- To properly install mounting kit: you must have a good understanding of automotive electrical procedures and systems, along with proficiency in the installation and use of safety warning equipment.
- When drilling into a vehicle structure, be sure that both sides of the surface are clear of anything that could be damaged.
- Inspect the mounting system periodically to ensure it is in good condition.
- File these instructions in a safe place and refer to them when maintaining and/or re-installing the product.

Failure to follow all safety precautions and instructions may result in property damage, serious injury, or death to you or others.

A. GENERAL.

Before attempting installation, ensure that the following parts have been included in the kit.

Qty.	Description	Part No.
4	Screw, Mach., Hex Hd., 1/4-20	7000A311-08
4	Nut, Hex., 1/4-20	7059A020
4	Lockwasher, 1/4-in.	7075A067
1	Screw, Thd. Frm., Phl. Hd., #8-32	7011A060-06
1	Tube Assy., Long	8546A119
1	Mounting Base	8546A085

CAUTION

Some of the steps in the following section require drilling or punching of holes in vehicle sheet metal. When performing these steps; ensure that electrical wiring, linkages or other vital components are not damaged when performing the drilling operation.

B. INSTALLATION.

1. Drill or punch a 1-5/8-inch (41mm) hole at the floodlight mounting location.
2. Slide the mounting base from the pole. Set the mounting base at the mounting location, insuring that the base flange is centered in the 1-5/8-inch hole drilled in step 1.
3. Using the mounting base as a template, scribe four (4) drill position marks on the mounting surface. Remove the mounting base.
4. If the supplied 1/4-20 Hex. Hd. Mach. screws are to be threaded into the mounting surface, drill four (4) No. 8 holes at the position marks. Tap the holes with a 1/4-20 tap. If the mounting base is to be secured with the supplied 1/4-20 screws and nuts, use an H (.266") drill to drill four holes at the position marks.
5. Replace the mounting base on the pole. Thread the supplied #8-32 thread-forming screw into the hole in the end of the pole, as shown in figure 1.
6. Route the floodlight power leads through the pole and into the 1-5/8 inch hole drilled in step 1.
7. Continue routing the power leads toward the power source. If necessary, additional 12AWG or larger wire may be spliced to the floodlight power leads. Be sure to insulate all splices.

8. Thread the pole into the floodlight assembly and tighten the set screw as shown in figure 1.

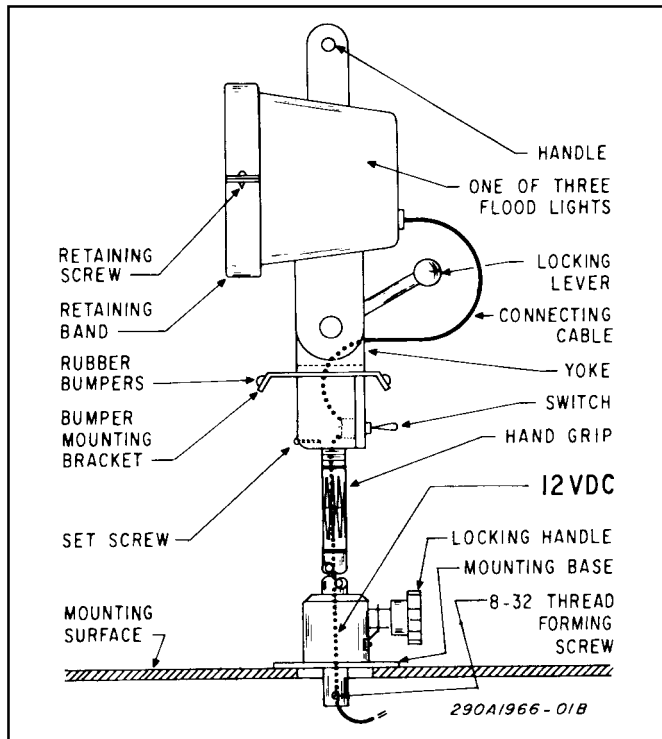


Figure 1.

9. Secure the mounting base to the mounting surface with the hardware mentioned in step 4. Ensure that the supplied 1/4-inch lockwashers are used.

10. Connect the power leads to the power source as shown in figure 2.

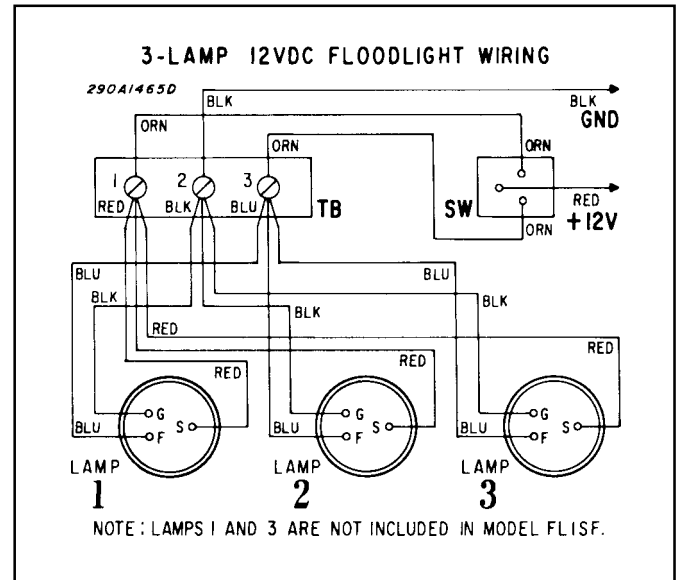


Figure 2.