

INSTRUCTION SHEET FOR MODEL FL3SF FLOODLIGHT

NOTE

Check the parts received against the appropriate kit contents list at the end of this sheet before performing the installation procedure in this sheet.

A. INSTALLATION.

1. Drill or punch a 1-5/8" (41 mm) hole at the floodlight mounting location.
2. Slide the mounting base from the pole. Set the mounting base at the mounting location, making sure that the base flange is centered in the 1-5/8" hole that was drilled in step a.
3. Using the mounting base as a template, scribe four screw position marks on the mounting surface.
4. Replace the mounting base on the pole. Thread the 8-32 phillips pan head self-tapping screw into the hole in the end of the pole, as shown in figure 1.
5. If the hex head mounting screws (supplied) are to be threaded into the mounting surface, drill four no. 8 holes at the position marks and tap the holes with a 1/4" x 20 tap. If the telescoping mount is to be secured with the supplied mounting screws and uses supplied 1/4"-20 nuts, use an H (.266") drill to drill four holes at the position marks.
6. If the electrical power leads will not be accessible after the base is attached to the mounting surface, proceed directly to step 7. However, if the power leads can be connected after the assembly is mounted, mount the base using the four 1/4"-20 hex head screws and lockwashers supplied.
7. Attach the floodlight and bumper mounting bracket to the flange on the pole using four 1/4"-20 hex head screws and lockwashers. Make sure that the bumper bracket is secured between the yoke and the flange as shown in figure 1. In addition, ensure that the end with the longer distance between the mounting holes and the bend faces forward, as indicated in figure 1. Thread the locking handle in the mounting base and tighten it to lock the pole at the desired height.
8. Insert the snap bushing into the hole in the center of the yoke. Press one rubber bumper into each of the two holes in the bumper mounting bracket, as indicated in figure 1.
9. Route the floodlight power cable through the bushing that was installed in step 8 and out the end of the pole. If necessary splice additional 12AWG, or larger, wire to the end of the cable. Two conductor cable with 12AWG, or larger, conductors may be used, if desired. Insulate all splices. Connect the power cable to the power source.

10. If necessary, attach the floodlight/telescoping mount assembly to the mounting surface using four 1/4"-20 hex head screws and lockwashers. Use 1/4"-20 hex nuts also, if required.

B. ADJUSTMENT.

CAUTION

During and immediately after or before operation, lamp housing is extremely hot. Gloves are recommended for aiming.

Vertical aiming of the floodlight is accomplished by rotating the locking lever downward and tilting the unit to the desired position. Lifting the locking lever should then lock the floodlight in position. However, if the locking lever does not lock the floodlight into position, proceed as follows:

1. Loosen the set screw in the locking lever hub and disengage it from the yoke hub.
2. Rotate the locking lever assembly downward so that the aligning pins engage the next set of holes in the yoke hub.
3. Rotate the locking lever upward to check that the floodlight locks in position. If the floodlight does not lock, repeat steps 2 and 3.
4. Retighten the set screw in the locking lever yoke.

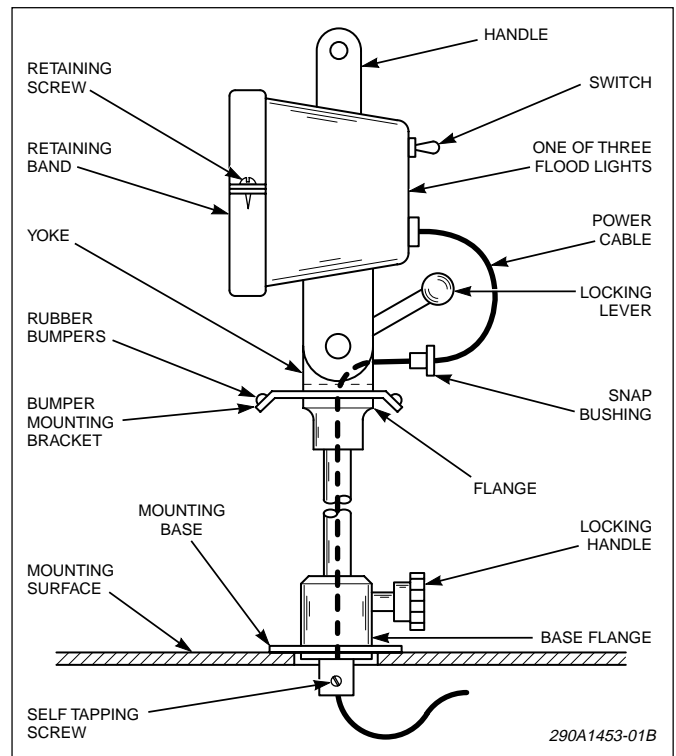


Figure 1.

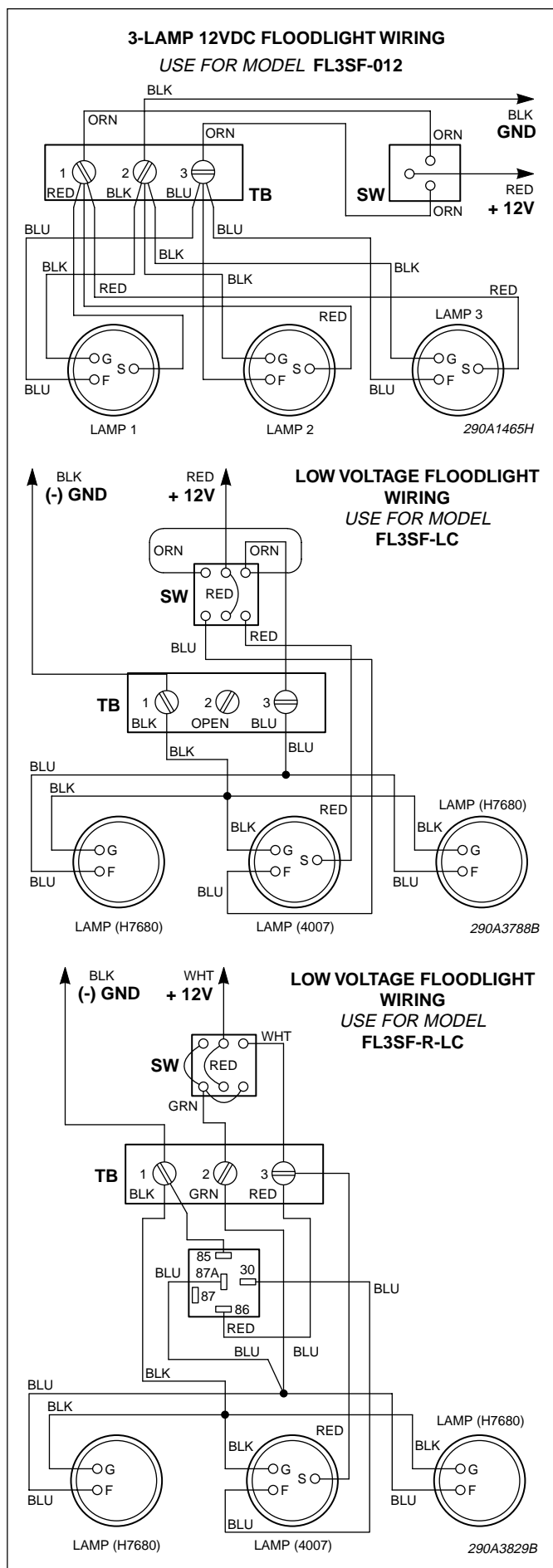


Figure 2.

C. LAMP REPLACEMENT.

CAUTION

Disconnect floodlight from power supply before lamping or servicing. Allow fixture to cool if it has been in operation. Use gloves when handling hot fixture.

1. Remove the retaining screw from the retaining band. Lift the retaining band from the light.
2. Pull the faulty lamp out of the housing and disconnect the power leads from the rear of the lamp.
3. See figure 2. Connect the power leads to the terminals on the replacement lamp. (See Table 1 for replacement lamps.)
4. Install the replacement lamp in the housing, making sure that the bosses on the edge of the lamp engage the notches on the front edge of the lamp housing and that the numeral "2" (cast into the front of the lamp) is to the right when the lamp is viewed from the front. See figure 3.
5. Replace the retaining ring on the lamp and lamp housing, making sure that the longer flange on the ring faces the front of the lamp and lamp housing. Replace and tighten the retaining screw.

FL3TK Telescoping Mounting Kit

Qty.	Description	Part No.
4	Nut, Hex	7059A020
8	Screw, Mach., Hex Hd., 1/4"-20	7000A311-08
1	Screw, thread forming, phillips, 8-32	7011A060-06
8	Lockwasher, 1/4"	7075A067
1	Stand Assy., Flood-light, Long	8546A085
1	Tube Assy., Long	8546A119
1	Instruction Sheet	256A547

LAMP AND SWITCH REPLACEMENT PARTS			
Model	Lamp No.	Lamp Part No.	Switch Part No.
FL3SF-012	4007	8107A117	122A212
FL3SF-012SB	4007	8107A117	122A217
FL3SF-LC	4007	8107A117	122A212
	H7680	8107A117-01	
FL3SF-R-LC	4007	8107A117	122A212
	H7680	8107A117-01	

Table 1. Replacement Parts.

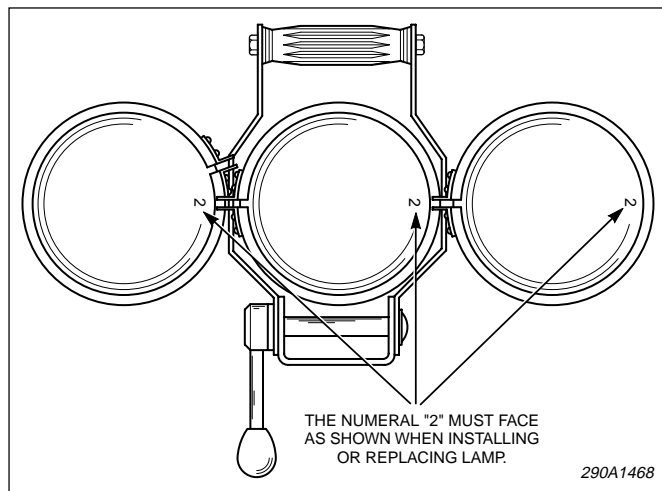


Figure 3.