

2561861 Rev B1 0422

Safety Message to Installers of Warning Light Equipment**⚠ WARNING**

People's lives depend on your proper installation and servicing of Federal Signal products. It is important to read and follow all instructions shipped with this product and the original product. Listed below are some other important safety instructions and precautions you should follow:

- To properly install the lighting and siren systems, you must have a good understanding of automotive systems, along with proficiency in the installation and use of safety warning equipment.
- In order to be an effective warning device, this product produces bright light that can be hazardous to your eyesight when viewed at a close range. Do not stare directly into this lighting product at a close range, or permanent damage to your eyesight may occur.
- Frequently inspect the light to ensure that it is operating properly and is securely attached to the vehicle.
- The holding power of magnetic mounting systems is dependent upon surface finish, surface flatness, and thickness of the steel mounting surface. Therefore, to promote proper magnetic mounting:
 - Keep the mounting surface and the magnets clean, dry, and free of foreign particles that prevent good surface contact.
 - Ensure that the mounting surface is flat.
 - Do not use a magnetic mounting system on vehicles with vinyl tops.
 - To prevent sliding of the light assembly on the mounting surface, avoid quick acceleration and hard stops.
- After installation and testing are complete, provide a copy of this instruction sheet to all operating personnel.
- File these instructions in a safe place and refer to them when maintaining and/or reinstalling the product.

Failure to follow all safety precautions and instructions may result in property damage, serious injury, or death.

Overview

This instruction sheet provides directions for installation and wiring of a magnetic suction cup mounting kit on HighLighter LED series light assemblies. Magnetic mounting provides a secure, temporary mounting method for most installations. However, it is not intended for use on the exterior of a moving vehicle.

Unpacking the Kit

After unpacking the kit, inspect it for damage that may have occurred in transit. If it has been damaged, do not attempt to install or operate it. File a claim immediately with the carrier, stating the extent of the damage. Carefully check all envelopes, shipping labels, and tags before removing or destroying them. Ensure that the parts in Table 1 are included in the package. If you are missing any parts, contact Customer Support at 1-800-264-3578, 7 a.m. to 5 p.m., Monday through Friday (CT).

Table 1 Kit contents

Qty.	Description	Part Number
2	Screw, Thd. Form, 1/4" x 5/8"	7011165-10
1	Cable Assembly with terminals	1751515
2	Magnet Assembly	8550A012-03
2	Suction cup	8560052
2	Washer	7072A025
1	Warning Label	200389
1	Locking strain relief	231273

Wiring the Unit

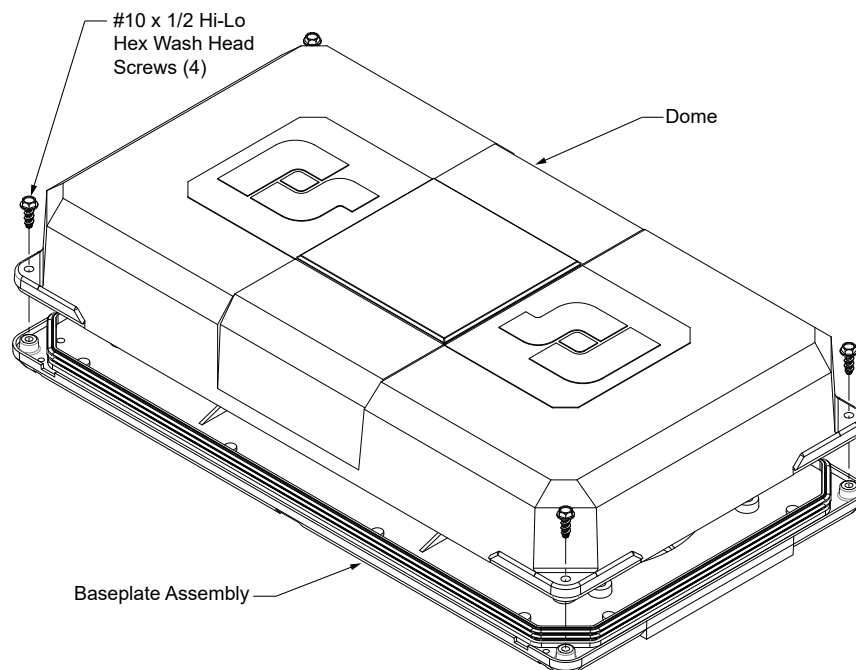
⚠ WARNING

SHOCK HAZARD: *Strobe and HID light systems generate high voltages. Disconnect power from the system and wait at least 10 minutes before opening the unit. Do not apply power to the unit while the unit is open. Failure to follow this warning could result in serious injury or death.*

To wire the unit:

1. Remove and retain the four screws (one at a time) that secure the dome to the base, and then remove the dome.

Figure 1 Unit parts



2. Remove and discard the foam mounting pad. Peel the pad back with slow and steady tension to minimize tearing of the pad.
3. Remove the strain relief bushing from the base plate. Pull the wires out of the wire exit hole, and remove and retain the strain relief bushing from the wires. Disconnect the black and red incoming wires from the PC Board.
4. Route the cable assembly through the wire routing hole in the base plate. Connect the ribbed wire to the positive (+) terminal and the smooth wire to the negative (-) terminal.
5. Replace the previously removed strain relief bushing.
6. Dress the wires inside the light assembly with user-supplied tie-wraps.
7. Test for proper operation.
8. Replace the dome using the previously removed screws.

Installing Magnets and Suction Cups

⚠ CAUTION

STRONG MAGNETS: Use caution. The magnets provided are strong and will be attracted to any nearby steel or other magnetic items.

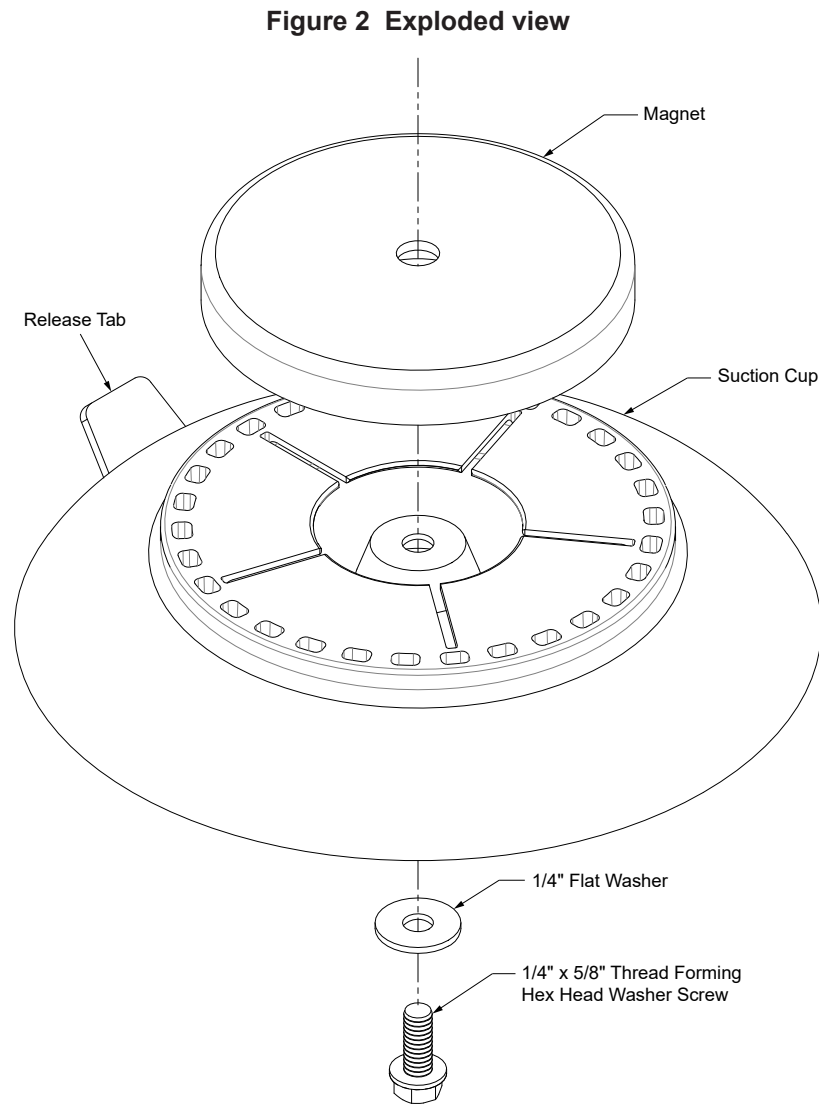
⚠ WARNING

The holding power of magnetic mounting systems is dependent upon surface finish, surface flatness, and thickness of the steel mounting surface. Therefore, to promote proper magnetic mounting:

- ***Keep the mounting surface and the magnets clean, dry, and free of foreign particles that prevent good surface contact.***
- ***Ensure that the mounting surface is flat.***
- ***Do not use a magnetic mounting system on vehicles with vinyl tops.***
- ***To prevent sliding of the light assembly on the mounting surface, avoid quick acceleration and hard stops.***

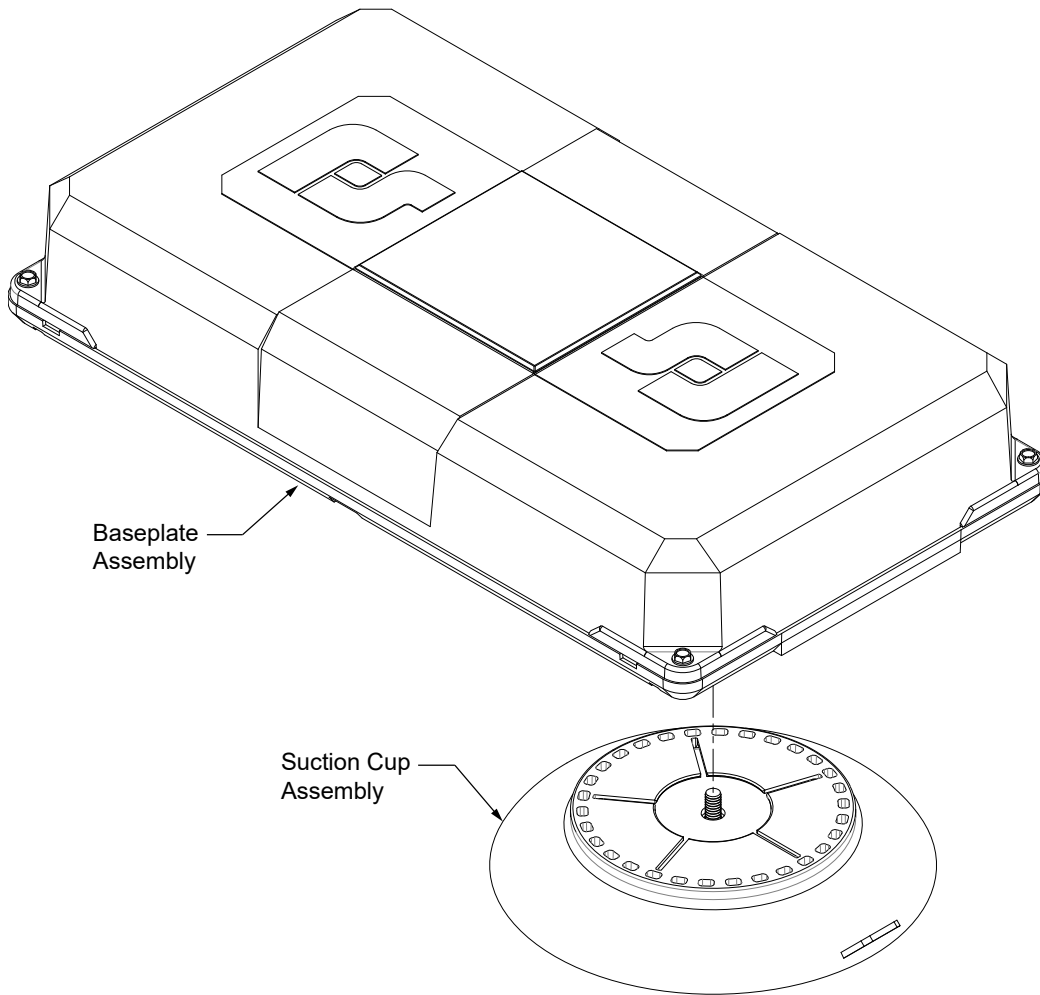
To install the magnets or suction cups:

1. Place a magnet into each suction cup as shown in Figure 2. All five flaps should cover the magnet.



2. Place the suction cup assemblies onto the base as shown in Figure 3. Be sure to align the release tabs with the end of the light assembly. Fasten to the base with a screw and washer. Tighten to 24 in-lb.

Figure 3 Baseplate and suction cup



Installing on a Vehicle Roof

Select a location for the light assembly on the vehicle roof that provides maximum signaling effectiveness for your application.

To install the unit on a vehicle roof:

1. Ensure that the mounting surface is flat. Place the light at the desired location.
2. Pull up on the release tab while pushing down on the top of the bar to release the trapped air. Repeat for the other suction cup.
3. To remove the light bar, pull up on the release tabs while picking up the light.

Operating the Unit

⚠ WARNING

HAZARDOUS CONDITIONS: *If conditions require your full attention, avoid inserting the plug in the cigarette lighter socket.*

Insert the plug on the end of the cable assembly in the accessory plug socket.

Getting Technical Support

For technical support, please contact:

Federal Signal Corporation
Service Department
Phone: 1-800-433-9132
Email: empserviceinfo@fedsig.com

Getting Repair Service

The Federal Signal factory provides technical assistance with any problems that cannot be handled locally. Any units returned to Federal Signal for service, inspection, or repair must be accompanied by a Return Material Authorization (RMA). Obtain an RMA from a local Distributor or Manufacturer's Representative. Provide a brief explanation of the service requested or the nature of the malfunction.

Address all communications and shipments to the following:

Federal Signal Corporation
Service Department
2645 Federal Signal Dr.
University Park, IL 60484-3167

Ordering Replacement Parts

To order replacement parts, call Customer Support at 1-800-264-3578, 7 a.m. to 5 p.m., Monday through Friday (CT) or contact your nearest distributor.

Limited Warranty

This product is subject to and covered by a limited warranty, a copy of which can be found at www.fedsig.com/SSG-Warranty. A copy of this limited warranty can also be obtained by written request to Federal Signal Corporation, 2645 Federal Signal Drive, University Park, IL 60484, email to info@fedsig.com or call +1 708-534-3400.

This limited warranty is in lieu of all other warranties, express or implied, contractual or statutory, including, but not limited to the warranty of merchantability, warranty of fitness for a particular purpose and any warranty against failure of its essential purpose.



FEDERAL SIGNAL
Safety and Security Systems

2645 Federal Signal Drive
University Park, Illinois 60484-3167

www.fedsig.com

Customer Support

Police/Fire-EMS: 800-264-3578 • +1 708 534-3400

Work Truck: 800-824-0254 • +1 708 534-3400

Technical Support: 800-433-9132 • +1 708 534-3400

© Copyright 1997-2022 Federal Signal Corporation

All product names or trademarks are properties of their respective owners.