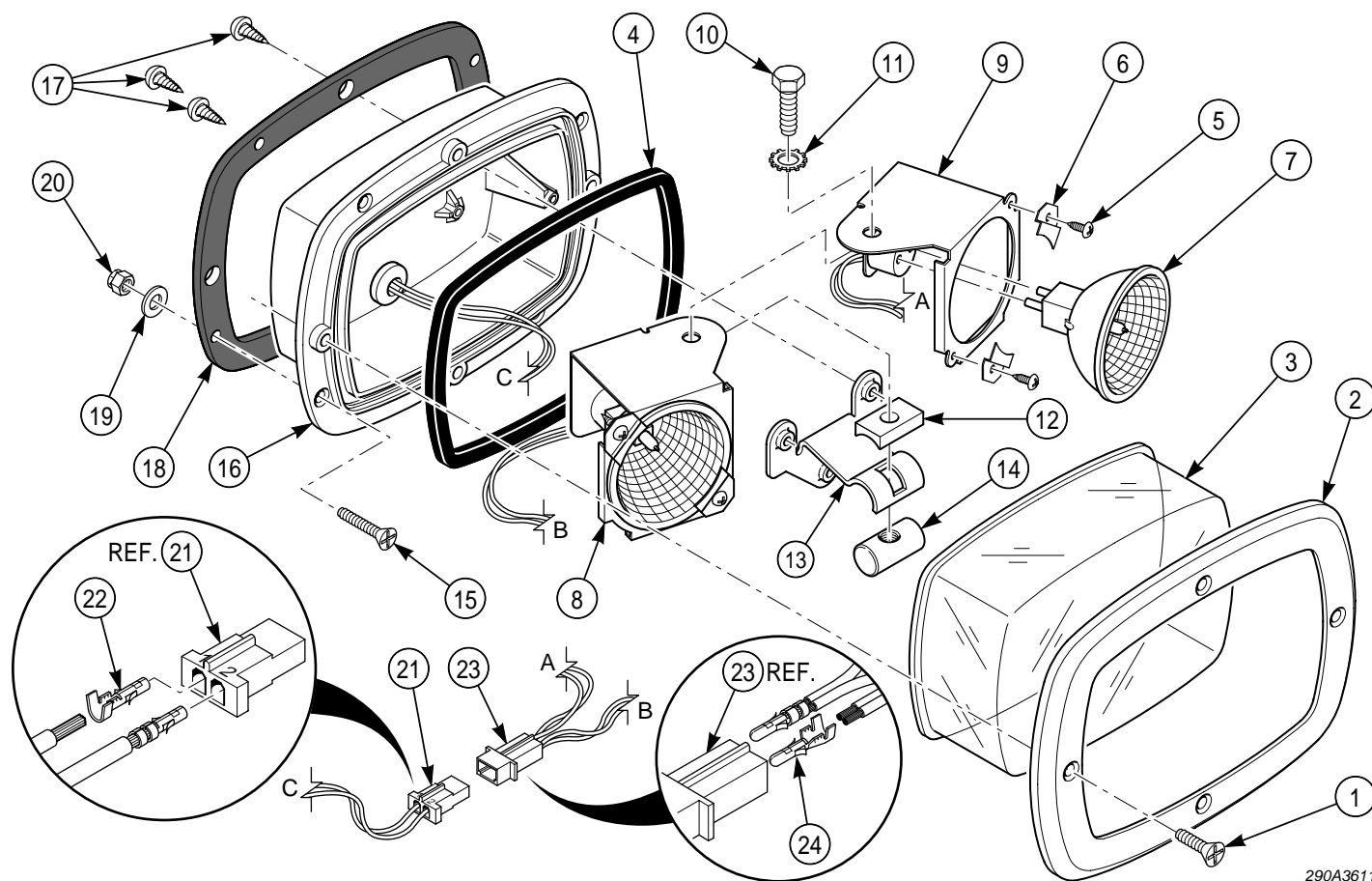


FLUSH MOUNT LIGHT GHSCENE



290A3611

 PPL0306
 PARTS LIST

Flush Mount Light Model GHSCENE

Printed 1999

Item No.	Description	Part No.	Qty.
1	Screw, Machine 4mm x 8mm, Phillips Flat Head		4
2	Trim Ring, GHSCENE	Z8575105A	1
3	Lens, Smooth (Clear)	Z8575108A	1
4	Gasket, Lens	Z8575096A	1
5	Screw, #4-24 x 5/16" Type B Thd. Frm., Phillips Pan Head		4
6	Bracket, Lamp Retainer		4
7	Floodlight, Halogen	Z8575107A	2
8	Bracket, Lampholder Left Side		1
9	Bracket, Lampholder Right Side		1
10	Screw, Machine 1/4-20 x 3/4" Hex Head		1
11	Lockwasher, 1/4" External Tooth		1
12	Block, Pivot		1
13	Bracket, Pivot		1
14	Roller, Pivot		1
15	Screw, Machine 4mm x 15mm, Phillips Flat Head		4
16	Base, GHSCENE		1
17	Screw, #6 x 3/16" Type B Thd. Frm., Phillips Pan Head		3
18	Gasket, Mounting	Z8575097A	1
19	Washer, Flat		4
20	Nut, Hex Elastic Stop		4
21	Connector, Male		1
22	Terminal Pin, Male		2
23	Connector, Female		2
24	Terminal Pin, Female		2
	Kit, Accessory (Includes items 1, 5, 10, 11, 15, 17, & 20 thru 24)	Z8575115A	1

DO NOT ORDER PARTS BY ITEM NUMBER.
 Give model, description and part number.
 When a part number is not supplied, the part is **NOT** available.
 Refer to PARTS PRICE LIST (Part No. 1001) for prices of parts.

Federal Signal Corporation
 2645 Federal Signal Drive
 University Park, IL 60466

Printed in U.S.A.