

PATHFINDER®

SIMPLY FOCUSED

Reduce Steps and Maximize Safety

PATHFINDER®

SIMPLIFYING LIGHTS AND SIREN ACTIVATION

**SO SAFETY IS
ALWAYS THE FOCUS.**

When your officers are in pursuit, every second counts. There's no time for distraction. By reducing the steps in lights and siren activation, the **Pathfinder®** vehicle response system frees officers to fully focus on the task at hand.

Keep safety at the forefront with the only fully automated system combining lights, siren and Rumbler® control.





A WORLD OF CONTROL AT YOUR FINGERTIPS.



Integrated Rumbler® capability.

Get attention and clear traffic more effectively than a standard siren tone.



Integrated Dual-Tone capability.

Provides a 50% increase in audible warning distance vs. single tone siren systems.



A high-level of customizable control capability.

Easily customize to your unique fleet requirements.



Easy to install. Fully compatible with your vehicle's OBD system.

Save time and expense with seamless vehicle integration.

REDUCE TACTICAL STEPS AND IMPROVE OFFICER SAFETY

SEAMLESS OBD INTEGRATION TO KEEP THE FOCUS ON EMERGENCY RESPONSE



Pathfinder® custom programs lights and sirens, giving officers complete control in emergency situations.



HIGH BEAMS: ACTIVATION

Changing warning lights to flood lights is as easy as activating the vehicle's high beams—keeping officer's eyes on the scene.



ILLUMINATION

Flood lights quickly illuminate the emergency scene for officer safety.



BRAKE ACTIVATION

Officer applies the brake to activate additional brake light modules, while maintaining warning light flash patterns.



HORN ACTIVATION

Demand attention through traffic—simply tap the horn to increase speed of light flash patterns and change siren tones.



CLOSED DOOR: FULL WARNING

When officer is in the vehicle with the doors closed, the warning lights are fully activated.



OPEN DOOR: END CAP SHUTOFF

When officer opens the vehicle's driver or passenger door, Pathfinder® automatically deactivates alley lights for an unobstructed view and activates running board lights to illuminate officer's path.

PATHFINDER. SOFTWARE

CUSTOMIZE YOUR LIGHT AND SIREN CONTROLS



Federal Signal's Convergence Network Configuration Software makes it easy to customize Pathfinder to the specific needs of your fleet—and access the controller's many custom features and benefits. Simply connect a USB to a computer and download the functions of the programmed software to the siren.

Programs can be extracted, modified and stored for ease of service and re-use—giving users the ability to clone an entire fleet.



FS Convergence Network Technology

Plug-and-play installation:
2 serial ports for FS
Convergence Network
products.



Programmable Timer Feature

Senses ignition status
and battery voltage to
automatically deactivate
lighting and other
devices—reducing vehicle
battery drain.



A Library of Siren Tones

Variety of attention-getting
SmartSiren®, Unitrol®,
PA300 and Powercall
siren tones
*Additional siren tones
available.*



Voice Message

Select from standard
pre-recorded messages or
optional custom voice
messages to broadcast alerts.

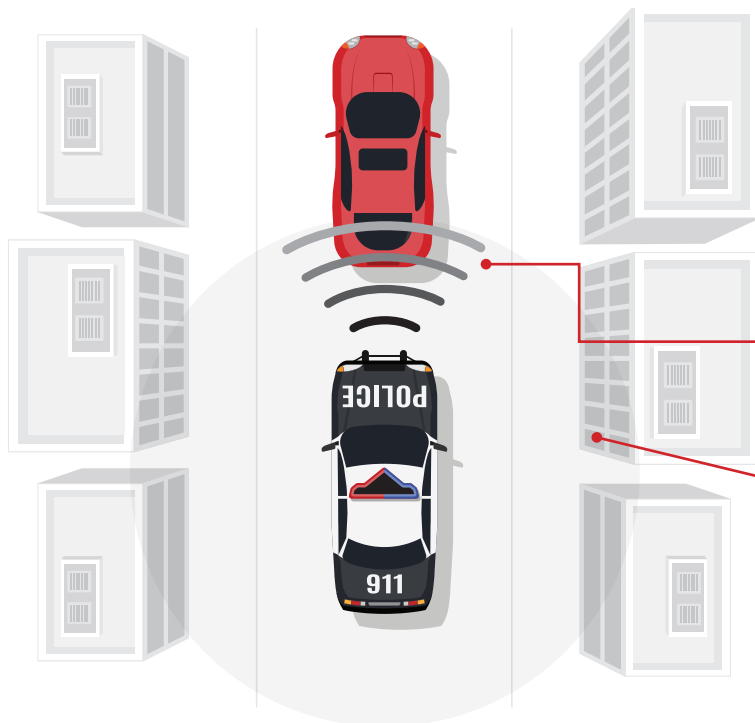
*Custom voice messages
available for an additional fee.*

CLEARING THE PATH

RUMBLER® OR DUAL-TONE CAPABILITY FOR MAXIMUM RESPONSE WHERE IT'S NEEDED MOST



When responding to a call, safety is the number one priority. Pathfinder® comes through with built-in Rumbler® traffic clearing capability or Dual-Tone integration to clear traffic where you need it most.



RUMBLER®

2X LOUDER WHERE IT MATTERS

Rumbler® low frequencies deliver up to 10dB more sound pressure inside civilian vehicles near your emergency vehicle—getting attention and clearing traffic more effectively than a standard siren tone.

Sound pressure varies based on vehicle type and distance.

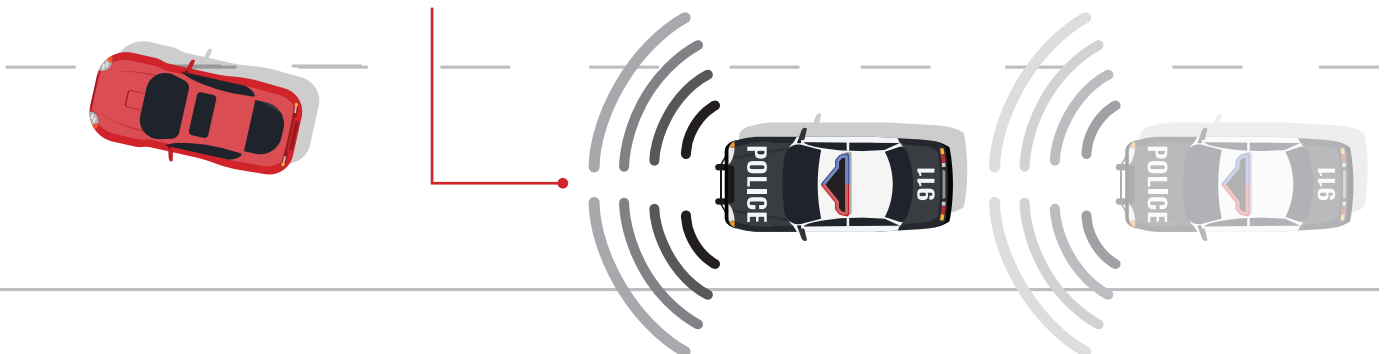
Low frequency tones work simultaneously with primary siren—penetrating nearby vehicles.

Particularly effective for Police and Fire/EMS applications in dense urban environments with heavy vehicle traffic.



DUAL-TONE

Provides a 50% increase in audible warning distance vs. a single-speaker/ single-tone system. Dual-Tone creates the perception of a multi-vehicle, emergency response ideal for highway patrol.

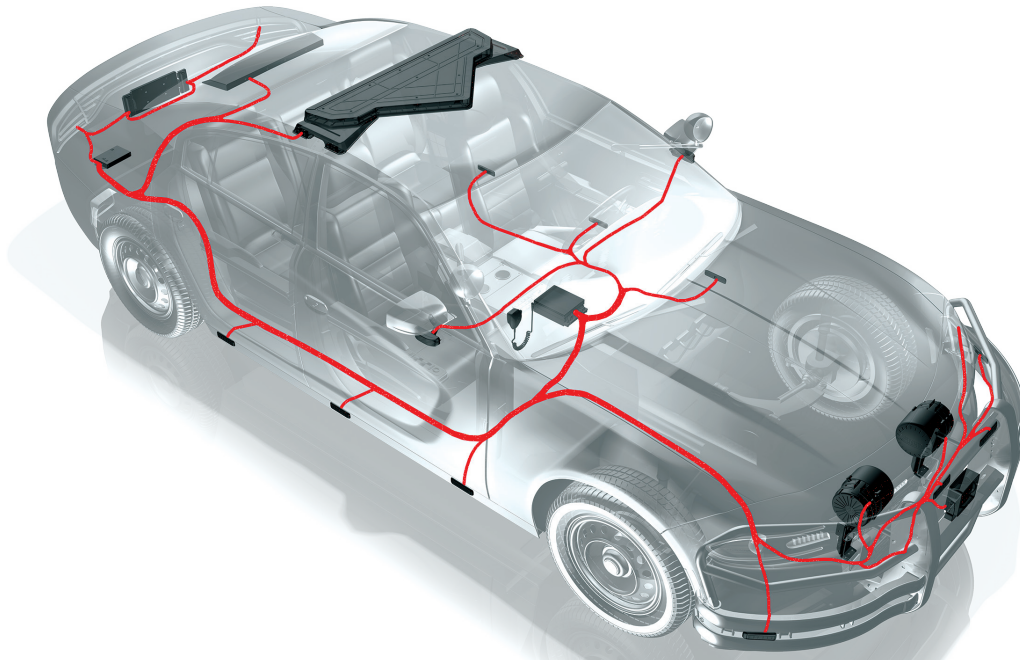


EASY TO INSTALL

BUILT-IN FEATURES THAT WORK WITH YOUR VEHICLES OBD SYSTEM



Integration: A simple plug-in connection. Using a dedicated vehicle cable, Pathfinder® works with the existing vehicle CAN bus system to seamlessly integrate with the vehicle allowing light and siren control with vehicle events. Using the FS vehicle integration also eliminates the need to separately wire features such as horn ring transfer or ignition, significantly reducing installation time and cost.



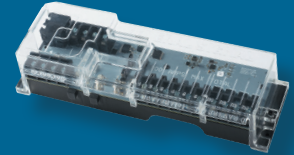
REAR EXPANSION MODULE

- Provides the ability to flash and blackout OEM brake, tail, turn, and reverse lighting and blackout third brake light
- Eliminates the need for a taillight flasher
- (18) Solid state fully programmable relay outputs, (16 7.5 Amp High 2 20 Amp High)
- (9) blackout relays
- Up to two Expansion Modules can be used with a Pathfinder siren
- Vehicle-specific rear taillight connection wire harnesses available



24-CHANNEL EXPANSION MODULE

- 24-Channel solid-state relay outputs, 2.5 A Max (active high), 30 A Maximum total
- Potted to help protect from unfavorable weather making it ideal for under the hood mounting
- All weather-proof connections
- Up to four 24-Channel Expansion Modules can be used with a Pathfinder siren
- Outputs can be dimmed and set as flashing or steady



POWER DISTRIBUTION MODULE

- Eliminates the need for externally mounted fuse holders
- 100 Amp Max load
- (8) Red LED indicator lights to the left of each fuse holder will illuminate if a fuse is blown and it has a load
- (4) Green LED indicator lights above the (4) programmable outputs will illuminate when output is active



ON SCENE SYNC MODULE

- Synchronize warning lights and voice messages between multiple "like programmed" vehicles
- Utilizes GPS signal to maintain timing
- Sync unlimited number of vehicles within any distance
- Includes an ambient light sensor to auto adjust warning lights



CONTROLLER OPTIONS



PF200
Self-Contained Controls with
Rotary Knob and Slide Switch



PF200H
Handheld Controller / Microphone
with 14 Push-buttons



PF2004S
Remote Surface-mount Controller
with 4 Push-buttons



PF200R
Remote Surface-mount Controller
with Rotary Knob and Slide Switch



PF200S17B
Remote Surface-mount Controller
with 17 Push-buttons and Slide Switch



PF200S6
Remote Surface-mount Controller
with 6- Push-buttons and Slide Switch

To learn more, visit fedsig.com/pathfinder-siren-light-controller

2645 Federal Signal Drive, University Park, IL 60484
800.264.3578 policefireorders@fedsig.com



Warning: Sirens and Speakers may produce LOUD sounds necessary to request the right-of-way. Sirens and Speakers may cause hearing damage. Wear hearing protection. Pathfinder and Rumbler, are trademarks of Federal Signal Corporation. Dodge is a trademark of its respective owners.

Pathfinder is a registered trademark of Federal Signal Corporation.
Ford, Dodge and Chevrolet are trademarks of their respective owners.

© 2019-2021 Federal Signal Corporation. 8/21 | M145