

INSTALLATION INSTRUCTIONS FOR INTERNATIONAL 4300 SERIES CAB MOUNTING FOOT KIT

SAFETY MESSAGE TO INSTALLERS

WARNING

People's lives depend on your safe installation of our products. It is important to read, understand and follow all instructions shipped with the products. In addition, listed below are some other important safety instructions and precautions you should follow:

- **To properly install a light assembly: you must have a good understanding of automotive electrical procedures and systems, along with proficiency in the installation and use of safety warning equipment.**
- **When drilling into a vehicle structure, be sure that both sides of the surface are clear of anything that could be damaged.**
- **You should frequently inspect the light system to ensure that it is operating properly and that it is securely attached to the vehicle.**
- **Refer to the instruction sheets packed with related products for additional precautions and information.**
- **File these instructions in a safe place and refer to them when maintaining and/or reinstalling the product.**

Failure to follow all safety precautions and instructions may result in property damage, serious injury, or death to you or others.

A. GENERAL.

This instruction sheet provides directions and parts for installing the raised, cast mounting feet with brackets onto an International 4300, 4400 series cab. This casting will raise a lightbar approximately 8.25" above the roof surface. Before proceeding with the installation ensure that the parts listed in the KIT CONTENTS LIST are included.

B. KIT CONTENTS LIST.

| Qty. | Description | Part Number |
|------|---------------------------------|-------------|
| 2 | Cast mounting foot | 8620216A |
| 6 | Bolt, Carriage | 7004A024-24 |
| 6 | Lock washer, Split | 7074A046 |
| 6 | Washer, flat | 7072A035 |
| 6 | Nut, 3/8-16 | 7059A063 |
| 1 | Driver side mounting bracket | 8620218A |
| 1 | Passenger side mounting bracket | 8620218A-01 |
| 8 | Gasket | 8620217A |
| 8 | 5/16 x 1" screw | 7000A005-16 |
| 16 | 5/16 flat washer | 7072A031 |
| 8 | 5/16 lock washer | 7074A020 |
| 8 | 5/16 hex nut | 7057A027 |

C. INSTALLATION.

IMPORTANT

This installation requires drilling into the roof of the cab. Thoroughly read and understand this instruction sheet before proceeding with the installation.

1. Remove the headliner to access the bottom side of the roof. Consult the vehicle service literature for the correct procedure.
2. Locate the sheet metal features that are shown in figure 1. There are several layers of sheet metal in these locations, which will be drilled through to mount the bracket.

CAUTION

Before drilling holes in ANY part of a vehicle, be sure that both sides of the mounting surface are clear of parts that could be damaged; such as brake lines, fuel lines, electrical wiring or other vital parts.

3. Place the drill template at the location shown in figure 1. Bend the plate at the perforations, so that it lies flat against the roof where the holes will be drilled. See figure 2 for a cross section view. The plate must be aligned with the edges as shown. This will locate 2 of the 4 holes for the adapter bracket. Mark the center of each hole and repeat this step for the opposite side.

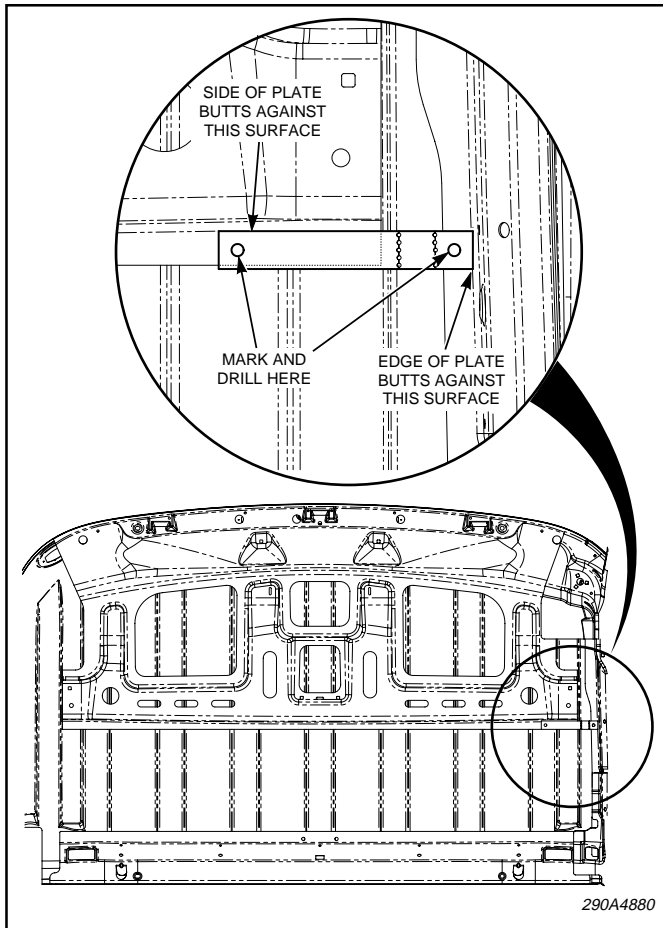


Figure 1.

4. Drill 4 5/16" holes into the roof at the marked locations from inside the cab. Deburr the holes.

5. See figure 3. Place each adapter bracket onto the roof as shown. There is one driver's side, and one passenger side bracket. The driver's side bracket has a single 1/8" hole at its front end. The passenger side has two 1/8" holes at its front end. Using the holes drilled previously and 2, 5/16" screws and nuts to temporarily secure each adapter bracket to the roof.

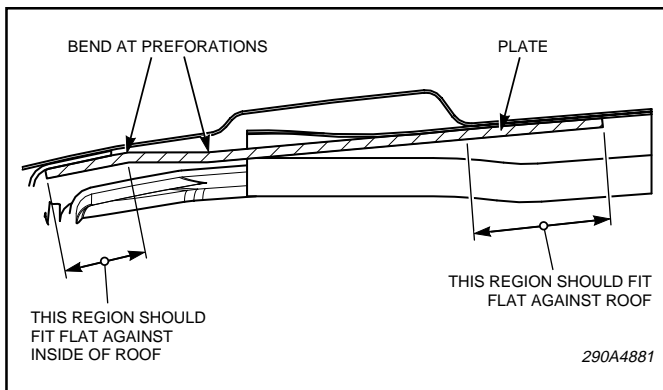


Figure 2.

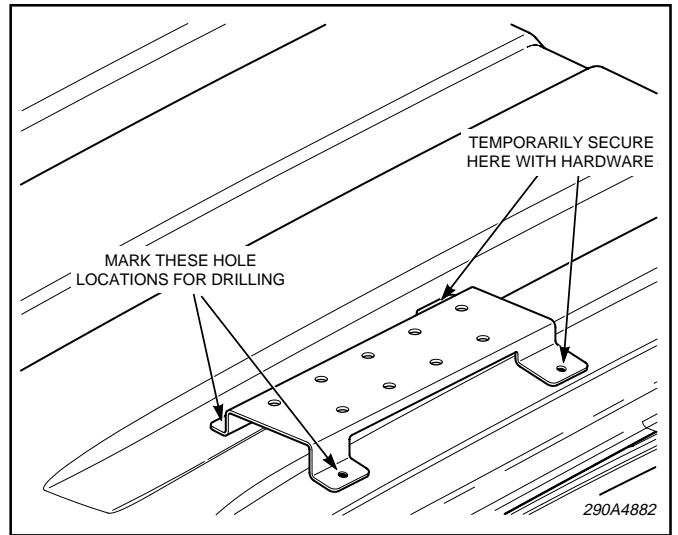


Figure 3.

6. Mark the locations of the two remaining open holes at each bracket. See figure 3. Remove the adapter brackets and drill 4 additional 5/16" holes from the outside of the cab. Deburr each hole.

7. See figures 4 and 5. The brackets have an array of holes that match the cast mounting feet. The casting can be bolted to the bracket at several distances from the front of the vehicle. Determine the final, desired location of the lightbar, and the set of mounting holes that will accomplish this. Bolt a mounting foot to each bracket using 3, 3/8" carriage bolts, nuts, washers and lock washers. The screw heads must be on the bottom as shown in figure 4, to clear the roof. Torque to 150 - 175 in-lb.

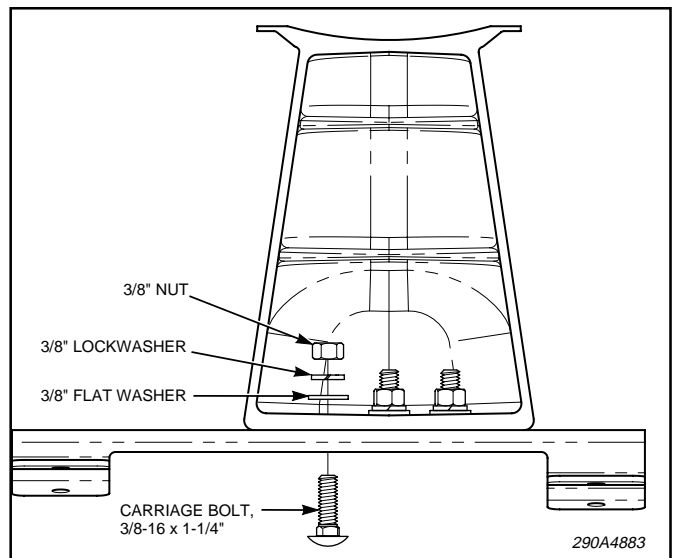


Figure 4.

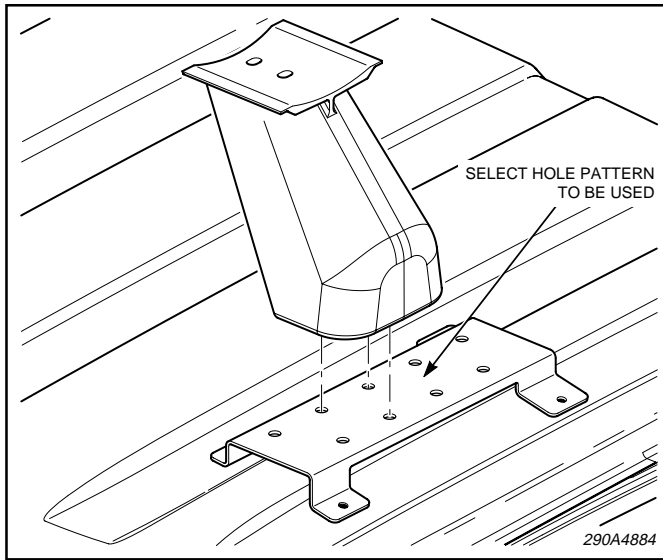


Figure 5.

IMPORTANT

Clean, lightly oil, and torque the mounting bolts to 150 - 175 in-lb.

8. See figure 6. Mount each mounting foot/ bracket assembly to the roof. Use a gasket, screw, nut and washers at each bolt location. Seal the gaskets using silicone sealant.

9. Allow the silicone to set. Check for leaks using a garden hose or pail.

10. Install the light bar. See figure 7. Refer to your specific light bars instruction sheet for additional information.

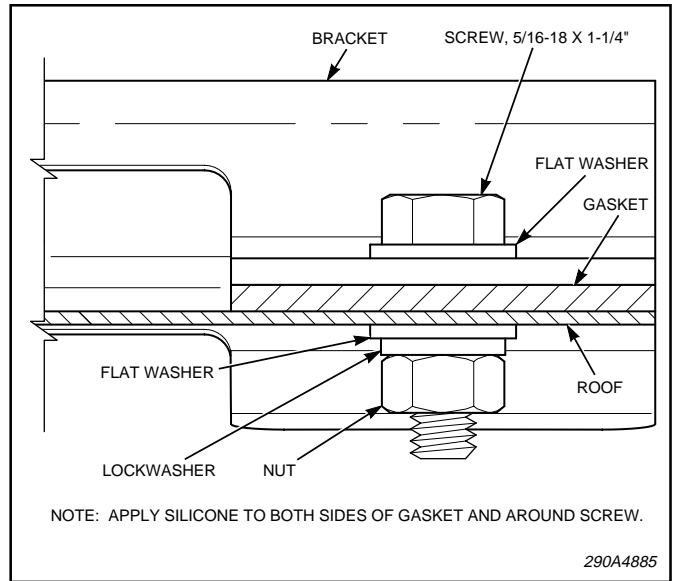


Figure 6.

IMPORTANT

Ensure the edge of the extrusion is positioned AT LEAST 1" in from the outer edge of the mounting foot and that the light bar is centered on the vehicle.

11. Complete the installation and replace the headliner.

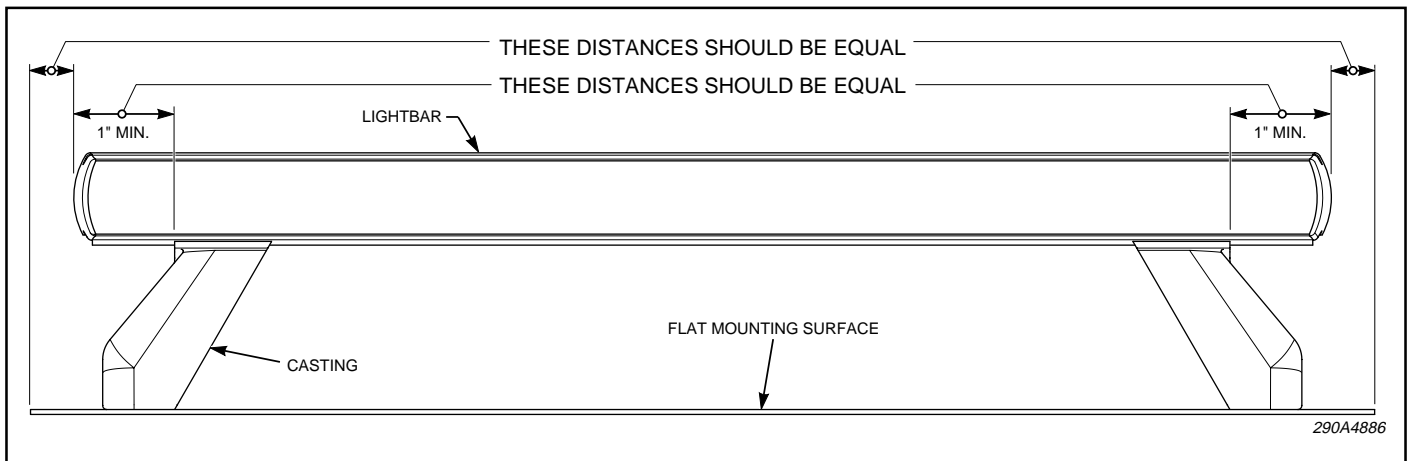


Figure 7.